

Pratt Safety Systems and UltraTech are pleased to introduce a comprehensive range of environmental products for Stormwater Pollution Management.

Environment Australia under the direction of Department of the Environment and Heritage has prepared a document titled "Introduction to Urban Stormwater Management In Australia". This document outlines current challenges and approaches for improving urban stormwater management within a water cycle framework.

Urban stormwater is defined as runoff from urban areas, including the major flows during and following rain, as well as dry-weather flows. Many factors influence the amount of stormwater and the contaminants that are transported by it. In addition to washing contaminants from the atmosphere, rainfall in the form of stormwater runoff flushes material accumulated on surfaces including litter, dust and soil, fertilizers and other nutrients, chemicals and pesticides, micro-organisms, metals, oils and grease into waterways.

The following range of Environmental Stormwater Management Products can assist in minimizing stormwater pollution and the effects they cause.

We also recommend reference to the respective State Government and Local Governments requirements and guidelines on this issue.

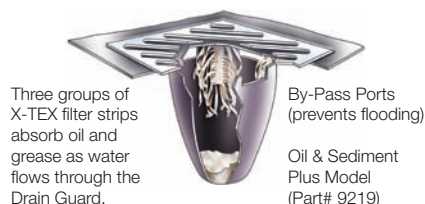
## ULTRA-DRAIN GUARD

Part No.	Description	H mm	W mm	D mm	Wt kg
9217	Ultra-Drain Guard, Oil and Sediment - 1 pack	1220	915	458	1
9218	Ultra-Drain Guard, Oil and Sediment - 10 pack	1220	915	458	10
9219	Ultra-Drain Guard, Oil and Sediment Plus - 1 pack	1220	915	458	1
9220	Ultra-Drain Guard, Oil and Sediment Plus - 10 pack	1220	915	458	10

Keep Sediment and other Pollutants from entering the Water System with Ultra-Drain Guard Catch Basin Inserts.

Designed for practical use in:

- Industrial Facilities - keep oil and other contaminants from entering storm drains.
- Construction Sites - capture eroded soil and wind-blown debris.
- Parking Lots, "Drive-up" Retail facilities - selected geotextiles collect oil, fuel and other contaminants that drip from cars.



## ULTRA-DRAIN GUARD, CURB-INSERT STYLE

Part No.	Description	H mm	W mm
9230	Ultra-Drain Guard, Curb Insert Style, Oil and Sediment For openings from 610 mm to 1067 mm	610	1067
9231	Ultra-Drain Guard, Curb Insert Style, Oil and Sediment For openings from 1067 mm to 1524	1067	1524
9239	Ultra-Drain Guard, Curb Insert Style, Oil and Sediment Plus For openings from 610 mm to 1067 mm	610	1067
9240	Ultra-Drain Guard, Curb Insert Style, Oil and Sediment Plus For openings from 1067 mm to 1524	1067	1524

Stop Oil, Sediment and other Debris from entering Curb Inlets and Catch Basins.

- For use with combination catch basins with a street grate and curb opening.
- Heavy duty tension rod secures Drain Guard inside curb inlet-stopping sediment and other contaminants from entering curb portion of storm drain.



## ULTRA-GRATE LIFTER AND GRATE HOOK

Part No.	Description	Wt kg
9234	Ultra-Grate Lifter	34
9241	Two-Piece Carrying Case for Grate Lifter	
9235	Ultra-Grate Hook	2

- Ergonomically designed - minimises potential injuries associated with heavy lifting.
- Allows single-person grate lifting - reduces personnel and maintenance costs.
- Disassembles quickly for easy transport - optional two piece carrying case available. (Part# 9241)



Model 9234



Model 9235

## ULTRA-DRAIN MARKERS

Part No.	Description
9208	Ultra-Drain Marker - 25 markers and adhesive

- Helps inform and educate the public that most storm drains go directly into waterways untreated.
- Installs quickly and easily using permanent adhesive. Cleaner and more environmentally friendly than paints and stencils.
- Designed for long life - heavy duty plastic construction is scratch resistant and will not rust or corrode.



## ULTRA-GRAVEL BAGS

Part No.	Description	H mm	W mm	Wt kg
9780	Ultra-Gravel Bags, 483 mm x 711 mm 250 per box, orange color	483	711	28
9782	Ultra-Gravel Bags, 280 mm x 1220 mm 250 per box, green color	280	1220	28
9283	Ultra-Gravel Bags, 280 mm x 2439 mm 250 per box, green color	280	2439	28



Heavy-Duty Bags provide Quick and Easy Sediment and Erosion Control.

Gravel bags are a basic BMP (Best Management Practice) used to meet regulatory requirements for stormwater and erosion control. The sizes are industry standard and allow the user to fill them up with as much or as little gravel (not included) as the application requires.

Different sizes lend themselves to different applications; from drain protection to erosion control at construction sites.

- Made of very high quality polymer material that is woven into shape - eliminates the flaws and failures of sewn edges.
- High UV rating allows multi-year life in sun and elements.
- Rugged material and construction can, in most instances, withstand being driven over, a typical problem with lesser bags.





## ULTRA-CURB GUARD PLUS

Part No.	Description	H mm	W mm
9248	Ultra-Curb Guard Plus, 102 mm x 915 mm	102	915
9251	Ultra-Curb Guard Plus, 102 mm x 1220 mm	102	1220

Protect Curb Inlets from Sediment-Laden Stormwater Runoff.

- Quick and easy installation.
- Modular design - build to any length.
- Units can be quickly and easily connected to form longer lengths.
- Wedge-shaped, heavy duty foam secures unit in curb inlet.
- Woven polypropylene material provides high flow rate - will not cause ponding or flooding.

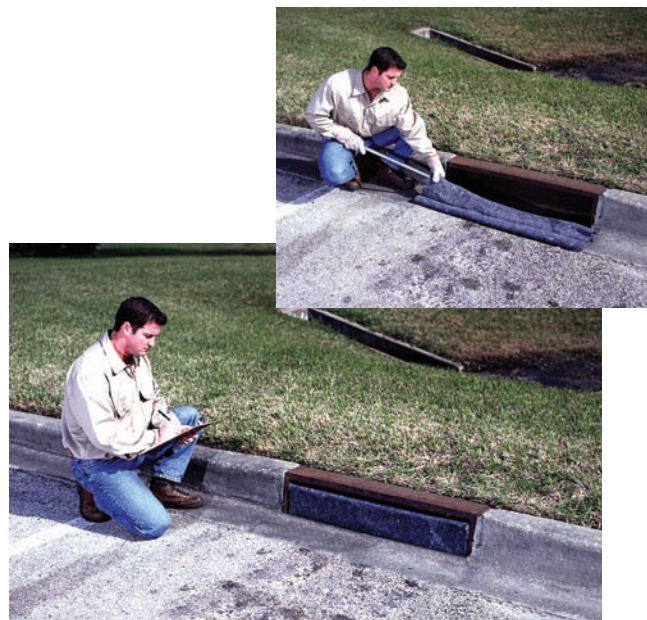


## ULTRA-CURB GUARD INSERT STYLE

Part No.	Description	H mm	W mm
9760	Ultra-Curb Guard, Insert Style, 559 mm – 889 mm	559	889
9761	Ultra-Curb Guard, Insert Style, 915 mm – 1524 mm	915	1524

Keep Oil, Sediment, Floatables and other Contaminants out of Curb Inlets.

- For use in drains with curb inlets only.
- Two heavy-duty tension rods keep unit secured inside inlet for a clean, flush-mounted installation.
- Filtering material is quickly and easily replaced.



## ULTRA-PIPE SOCK

Part No.	Description	D mm	W mm
9705-O/S	Ultra-Pipe Sock, 204 mm diameter x 1524 mm	204	1524
9706-O/S	Ultra-Pipe Sock, 305 mm diameter x 1524 mm	305	1524
9707-O/S	Ultra-Pipe Sock, 407 mm diameter x 1524 mm	407	1524

Control the flow of Sediment and Oil out of Headwall and other types of Pipes.

- Also use in pond applications where vertical pipes extend above the water surface, and preventing sediment in-flow during high-water events is required.
- Several standard sizes available



## ULTRA-HYDRO KLEEN

Part No.	Description	H mm	W mm
9470	Ultra-Hydro Kleen Flat Frame to fit 508 x 635mm Drain	508	635
9471	Ultra-Hydro Kleen Flat Frame to fit 660 x 838mm Drain	660	838
9472	Ultra-Hydro Kleen Flat Frame to fit 863 x 1219mm Drain	863	1219
9473	Ultra-Hydro Kleen Recessed Frame to fit 508 x 635mm Drain	508	635
9474	Ultra-Hydro Kleen Recessed Frame to fit 660 x 838mm Drain	660	838
9475	Ultra-Hydro Kleen Recessed Frame to fit 863 x 1219mm Drain	863	1219

Mix and match filter media depending on your specific needs. HydroKleen is the only catch basin filter that allows you to use more than one type of filter media.

- Sorb 44 - Used to remove oil and other hydrocarbons.
- Phos Filter - Excellent for removal of phosphorous.
- Activated Carbon - Excellent "polishing media". Helps remove certain chemicals, hydrocarbons and odours.
- Heavy Metal Removal - Custom filter media blend helps remove zinc, lead, copper and other harmful, heavy metals.

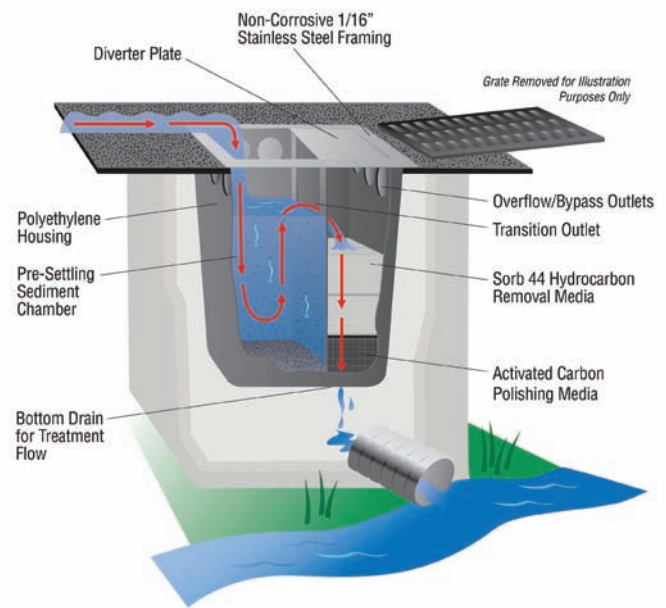
*Note: Ultra-HydroKleen units are custom made to fit each individual catch basin. The final pricing is based on the configuration of the frame (Flat or Recessed) and the number of filter media required (2 or 3). This cannot be determined until the end user has submitted the completed Measurement Instructions and Filter Media selection forms. Please visit the UltraTech website: [www.spillcontainment.com/hydrokleen](http://www.spillcontainment.com/hydrokleen) for further information.*



Part No.	Options
9466	Sampling Option
9467	Sample Collector
9463	Activated Carbon
9462	Sorb 44
9461	Phos Filter
9460	Heavy Metal Removal

Advanced Catch Basin Filter Captures Multiple Pollutants, and also provides Sampling Capability.

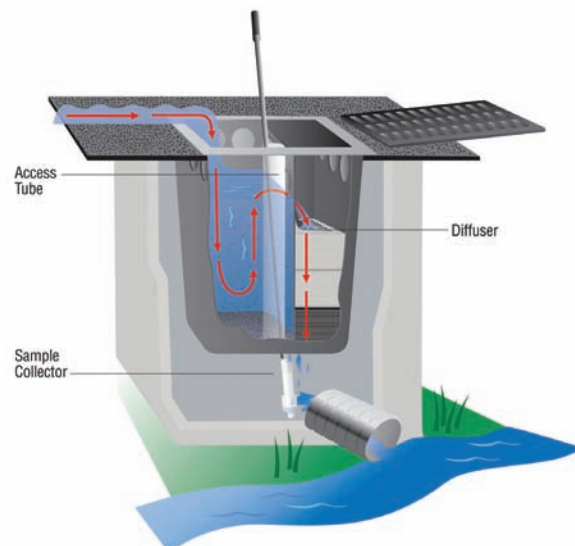
- Removes hydrocarbons, heavy metals, sediments and other organics from stormwater and industrial run off.
- Exceeds 80% sediment removal efficiency.
- Patented filtration system allows different filter media to be used together to remove targeted pollutants.
- Choose a mix of filters to remove hydrocarbons/oil, chemicals odour, phosphorus and heavy metals from water flow.
- By-pass system prevents flooding or ponding during high flow storm events.
- Excellent post-construction control for drains that are more susceptible to large concentrations of contaminants.
- Units available for round or square catch basin grates.
- Considered a "true filter" with separate chambers for sediment removal and filters.



## NEW ULTRA-HYDRO KLEEN SAMPLING OPTION

Convenient and effective means to obtain samples of "post treatment" effluent from the Ultra-HydroKleen to comply with monitoring and testing requirements.

- Sampling Option provides standard HydroKleen with modifications to allow Sample Collector (sold separately) to pull "post treatment" water samples from below the unit's filters.
- Take real-time samples during storm events.
- Access Tube stays capped until a sample is desired.
- Simple sampling - No need to remove the Ultra-HydroKleen to take a sample. Simply remove the grate, uncap the Access Tube and insert the Sample Collector.
- Sample Collector has a 60" long handle - makes collection quick and easy.





## ULTRA-DRAIN GUARD RECYCLED MODEL

Part No.	Description	H mm	W mm	D mm	Wt kg
9378	Ultra-Drain Guard, Recycled Model - 1 pack	1220	915	458	.5
9379	Ultra-Drain Guard, Recycled Model - 10 pack	1220	915	458	5



Keep Oil and Sediment from entering Catch Basins with Environmentally Friendly inserts.

- Made completely out of X-TEX material - 100% recycled content.
- Superior water flow rate together with built in overflow ports prevents ponding and flooding.
- X-TEX material captures silt and sediment from runoff in addition to absorbing hydrocarbons.
- Quick and easy installation - simply lift catch basin grate, lower Drain Guard in place, and replace the grate.
- Holds up to 5 litres of oil and up to 18kg of sediment.

## ULTRA-DRAIN GUARD REUSABLE MODEL

Part No.	Description	H mm	W mm
9341	Ultra-Drain Guard Reusable - 610 x 610 mm	610	610
9340	Ultra-Drain Guard Reusable - 610 x 915 mm	610	915
9342	Ultra-Drain Guard Reusable - 610 x 1220 mm	610	1220
9332	Ultra-Drain Guard Reusable Curb Style - 610 x 610 mm	610	610
9330	Ultra-Drain Guard Reusable Curb Style - 610 x 915 mm	610	915
9331	Ultra-Drain Guard Reusable Curb Style - 610 x 1220 mm	610	1220

Capture Dirt and Sediment at Construction Sites and other "High Erosion" Areas.

- Rugged polypropylene construction can be easily rinsed and reused.
- Deep accumulation pocket (36") can hold up to 500lbs of soil, sand, sediment and dirt.
- Designed for easy removal with backhoe, forklift or other equipment.



## ULTRA-DEWATERING BAG

Part No.	Description	Capacity L	D mm	W mm
9729-O/S	Ultra-Dewatering Bag, 915 mm x 1220 mm	170	915	1220
9724-O/S	Ultra-Dewatering Bag, 1829 mm x 1829 mm	510	1829	1829
9725-O/S	Ultra-Dewatering Bag, 3048 mm x 4572 mm	4247	3048	4572

Contain Sediment and Oil pumped out during Dewatering Operations.

- Retains both oil and sediment, offering a combination of benefits not available in alternative dewatering bags.
- Three different sizes available.
- Accommodates up to a 6" discharge hose.



## ULTRA-FUEL MOP

Part No.	Description
3300	Ultra-Fuel Mop (includes 6 Sorbent pads)
3305	Ultra-Fuel Mop Replacement Sorbent pads (50 pack)
3307	Ultra-Fuel Mop Drip Tray (Used to Drain and Store Fuel Mop)

Quick Response to Small Hydrocarbon Leaks and Spills on Water.

- Fast-Wicking pads are designed to soak up 25 times their weight in oil and other petroleum products, but will not soak up water.
- Polypropylene "oil only" sorbent pads are cut to fit - easily removed and replaced after they have been saturated.
- Foam core allows mop head to float on top of the water and pull off oil, gas and hydrocarbon sheen that floats on the surface of the water.
- Floating design and pivoting handle make water surface clean up easy with no stray oil pads to retrieve.
- Aluminium handle telescopes from 30" to 52" - provides easy to reach spills.

